

# STV-4 – Full-HD-Manhole-Zoom-Camera

## The „electronic sewer periscope“ for routine inspection of pipes and sewers

### System Description

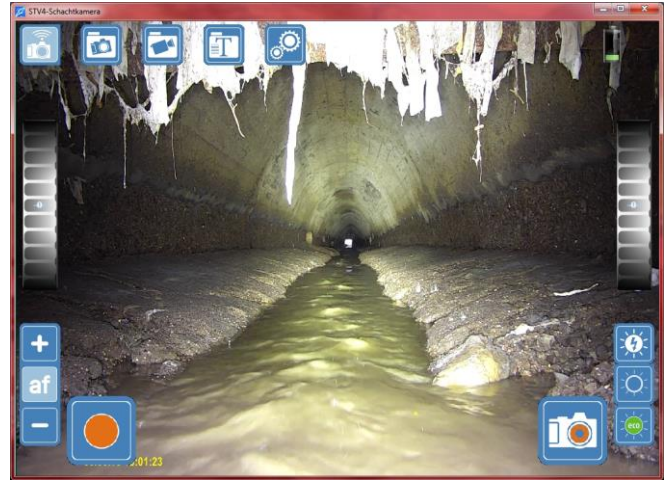
The remote controlled zoom camera STV-4 serves the assessment and documentation of the status of sewers, pipes, shafts, manholes, vessels, inspection points, separators and collecting tanks without entering.

Working cable-free this Full-HD camera will be controlled by WiFi with a rugged tablet PC or a inspection car within radio range.

Thanks motor-driven vertical adjustment this camera can be used in one-man operation mode.

Camera unit with newest generation camera chip and high power, high efficiency LEDs will be supplied by ultra compact rechargeable batterie units.

Combination of highest performance camera technology and optimized lightning modules gives a astonishing far-reaching look into sewers and waste water pipes and allows a zoom in for assessing the cleanness of the pipelines and sewers to provide a “Cleaning on demand”.



Control software: All functions available as by screen touch as also by mouse and keyboard



### Technical Parameters

- Optics:** Light sensitivity 0,01 Lux, Newest generation Full-HD-Chip, 30 x optical + 12 x digital zoom, Automatic and manual focusing, Camera unit +10°/-30° motor-driven Rotatable in vertical direction Full WiFi controlled by rugged tablet, Control software included
- Lightning:** 12 high efficiency LEDs Power / lightning management for maximized battery operation time
- Operation:** WiFi control of zooming, focusing, vertical direction and lightning by notebook, handheld PC or tablet Optimized WiFi range by router unit integrated in rod system Control software with adjustable resolution and compression rate for video recording
- Protection:** Camera IP 67 filled with shield gas, Permanent overpressure monitoring Not explosion proof
- Options:** Telescoping rod systems 6,5m/10m Materials carbon / aluminium Rugged Tablet PC Manhole grill with camera holder Aluminium tripod with swivel bearing Connecting rod system for higher inspection depths Inspection Software